

# TLI. Hook clamps

Steel or stainless steel

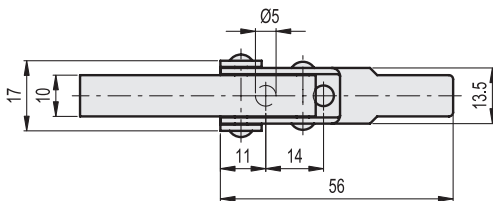
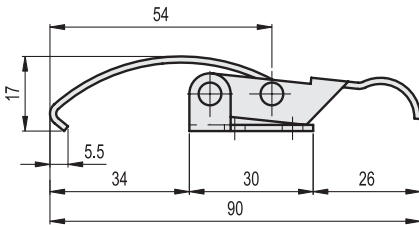


## STANDARD EXECUTIONS

- **TLI.Z**: zinc-plated steel.
- **TLI.SST**: AISI 304 stainless steel.

## SPECIAL EXECUTIONS ON REQUEST

Hook clamps in unplated steel or nickel-plated steel.



## TLI.Z

METRIC

Code	Description	Max. working load [N]	Load at breakage [N]	⚖️
420131	TLI.Z-13.5/90	500	900	28

## TLI.SST

INOX STAINLESS STEEL METRIC

420132	TLI.SST-13.5/90	500	900	28
--------	-----------------	-----	-----	----



Latches